

# TREBLE CLEF

## GUIDED INFO SHEET

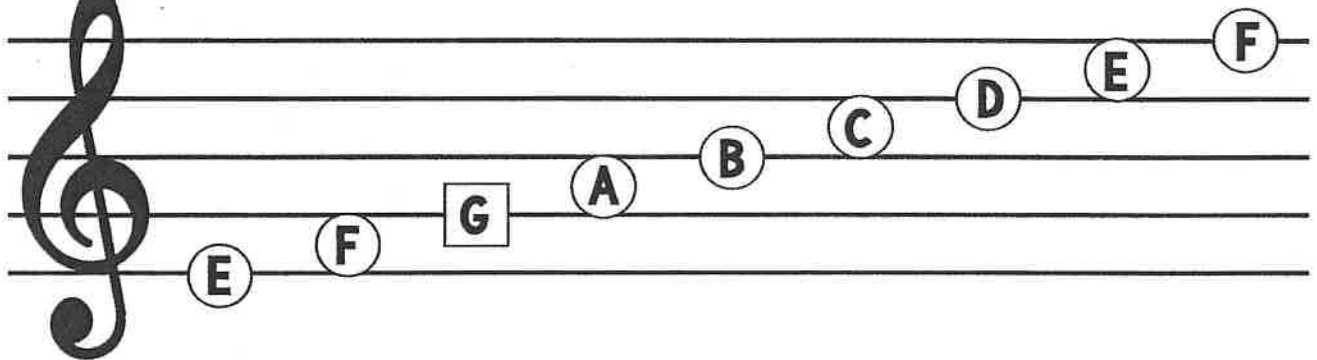
NAME: \_\_\_\_\_

This symbol is called a Treble Clef.

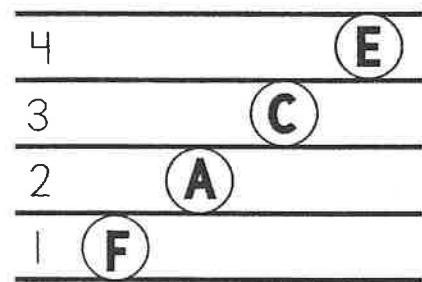
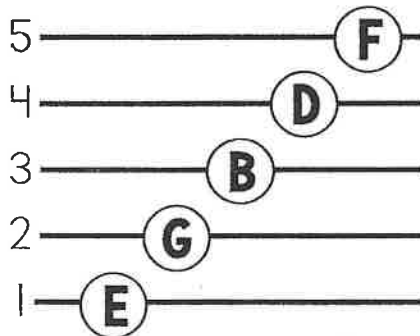


A clef gives names to the notes placed on the lines and spaces.

The Treble Clef is also known as the 'G' Clef because its curl designates where 'G' is placed.

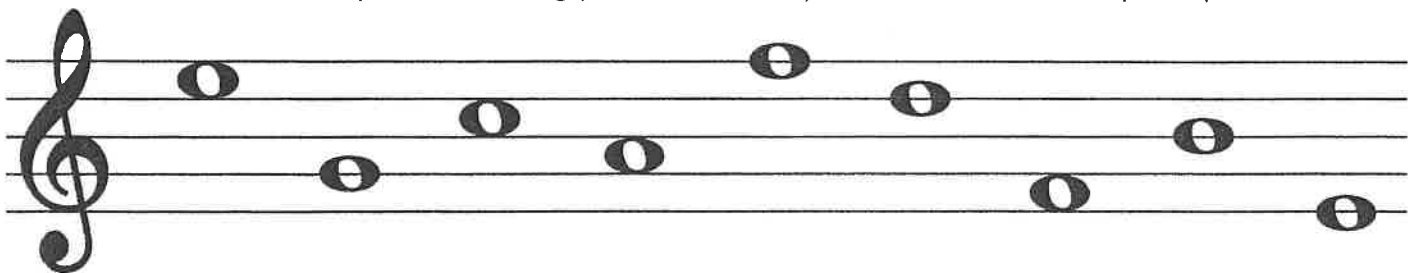


**LINES**



**SPACES**

**TRY IT OUT!** Identify the following pitches. Write your answers in the space provided.



---    ---    ---    ---    ---    ---    ---    ---    ---